

REPORT UPDATE PREPARED BY SCC : Summary of key issues and outcomes for Station Road/Pebble Hill, Betchworth – October 2024

Scheme	Update	Expected delivery date
<p><b>Clearing/drainage -</b></p>	<p><b>Drainage</b> investigation works took place on 05/01/2024 at the bottom of Pebble Hill on Station Road, Betchworth. The aim of the investigation was to find out all the causes of rainwater ponding and failing gully at the bottom of the hill and to find a deliverable and affordable maintenance solution.</p> <p>The investigation, carried out by experienced and knowledgeable drainage engineers, showed that there were blockages in the connecting pipework between the gullies as well as damage to the connection to the gully. The pipework needs to be replaced otherwise, during times of heavy rainfall, the drainage system will not be effective, and more rainwater will go down the road surface and pond at the bottom of the hill.</p> <p>Work was planned work to excavate the road to replace 65.5m of the existing pipework with new pipework and connect 2 of the drainage gullies into the drainage system. However, due to the collapsed gully along Station Road and the temporary signals in place that were causing disruption to the traffic, resulting in vehicles queuing over the railway crossing, this work was escalated to an emergency status.</p> <p>On the 21/10/24 the team closed Station Road under an emergency permit and brought forward the work to lay the 6mm pipe, (a standard design used by SCC across the highway road network). This work was previously expected to take 2.5 weeks to complete, however the team diverted resource to this site with an aim to minimise the closure time; the team finished ahead of time enabling the road to be reopened on Friday evening. This emergency closure was expected to be in place from <b>Monday, 21st October 2024, and continue through to Sunday, 27th October 2024.</b></p> <p>Without this new connection the flooding issues were expected to continue, and the gully would repeatedly fail causing emergency closures or temporary signals to be used at this location.</p> <p>This work had to be completed under a full road closure traffic management to safely carry out the works in accordance with chapter 8 regulations of the Traffic Signs Manual. It is not possible to safely carry out this work using 2-way traffic signals, due to insufficient road space to create a safe working zone.</p> <p>It is always best for the public to engage directly with us via ‘fix my street’ or <a href="mailto:contactcentre@surreycc.gov.uk">contactcentre@surreycc.gov.uk</a> as our teams on site do not always have full details of the drainage system or background of the project. The 65.5m pipe project currently underway is specifically related to the two blocked roadside gullies and is not part of any other associated work.</p> <p><b>We would like to thank you for your understanding and cooperation whilst we completed this essential work last week.</b></p>	<p><b>Completed between 21/10/24 to 25/10/24</b></p>
<p><b>General Maintenance including</b></p>	<p><b>Embankment works</b> – the area is assessed every other day to ensure the barriers, that enable the road to remain open to use, remain in place. This</p>	<p>The embankment has a safety inspection every other day. The</p>

REPORT UPDATE PREPARED BY SCC : Summary of key issues and outcomes for Station Road/Pebble Hill, Betchworth – October 2024

<p><b>embankment/barrier works</b></p>	<p>is not a quick fix; the team are reviewing an innovative soil retention product to strengthen the bank, which should provide a permanent repair.</p> <p>The barriers are being used to ensure this road remains safe to keep open whilst the embankment retention work is designed.</p> <p><b>Rutts in the verge along Station Road, Betchworth</b> – These have been inspected and although the area is unsightly, the area has not been assessed as a safety critical request at this time.</p> <p>There are more requests for vegetation work than could be delivered in any given timescale, with the limited resources available. This work on the verge is not currently programmed but could be planned in the future once resource is available, as we have to carry out safety critical works first.</p> <p>It is our understanding that a business opposite this area have applied for planning permission to alter the entrance to their business. This could change the way that deliveries are made and also the risk of damage to the verge.</p> <p>Installing HGV kerb-type protection has also been considered, but in broad terms is not feasible. The area of verge is located within an existing vehicle crossover that leads into a field. It is not feasible for us to restrict or hinder access to the adjacent landowner's property.</p> <p><b>Footpath clearance</b> - Work to clear the footpath edges from Station Road roundabout to the Network Rail level crossing has been requested.</p> <p><b>Surfacing condition</b> – any safety defects can be reported on Fix My Street here: <a href="https://www.surreycc.gov.uk/fix-my-street">Fixing Surrey's streets - Surrey County Council (surreycc.gov.uk)</a>, <a href="https://www.surreycc.gov.uk/how-we-manage-pothole-repairs">How we manage pothole repairs - Surrey County Council (surreycc.gov.uk)</a></p> <p>In addition, we have a programme of major surfacing maintenance that can be viewed on the map here: <a href="https://www.surreycc.gov.uk/horizon-highway-maintenance">Horizon – highway maintenance investment programme - Surrey County Council (surreycc.gov.uk)</a>.</p> <p>There are regular Highway Safety Inspections of our road network, and Pebble Hill has a higher frequency of inspections because of the strategic nature of the road. This road is designated as Surrey Priority Network category of 2 (SPN2). Details about this categorisation and the inspection</p>	<p>design for using this innovative new product is under way.</p> <p>This work will now be completed in the new year, together with drainage works that are required along the north side of Station Road/Pebble Hill. This couldn't be completed during the emergency closure as this road was part of the diversion route.</p> <p>Works to repair the rutts in the verge are not currently planned.</p> <p>There are no timescales available yet for the requested clearing of the footpath from Station Road roundabout to the Network Rail level crossing.</p> <p>Potholes and road surfacing issues are assessed, and any repairs required are delivered in different timescales dependent on priority.</p>
--	--	--

REPORT UPDATE PREPARED BY SCC : Summary of key issues and outcomes for Station Road/Pebble Hill, Betchworth – October 2024

	policy can be found here: <a href="https://www.surreycc.gov.uk/highway-safety-inspections-standards-and-procedures">Highway Safety Inspections - standards and procedures - Surrey County Council (surreycc.gov.uk)</a>	
<b>Speeding – 30mph reduction</b>	<p>A Feasibility Study is being commissioned for this Financial Year for consultation and potential implementation of feasible and affordable measures in the following Financial Year.</p> <p>We anticipate a scheme consisting of a reduction to 30 mph with an enhanced speed limit gateway, enhanced repeater signing, and if feasible, depending on available power sources, some vehicle activated signs in support of the reduced 30 mph limit. The Feasibility Study brief will also include consideration of improving the uncontrolled crossing for people using the Pilgrims Way. It is appreciated that this crossing point is heavily used annually by Duke of Edinburgh Award students.</p> <p>This Feasibility Study has been made possible by funding from Cllr Helyn Clack’s available budgets.</p>	<p>Feasibility Study commissioned with target completion in 2024/2025 Financial Year.</p> <p>Potential delivery of feasible and affordable measures in 2025/2026 Financial Year.</p>

Regarding the emergency gully replacement in Station Road, Betchworth where temporary two-way traffic lights are in place to manage the traffic flow. It is imperative that the lights are in place to ensure that traffic flows safely through this road and around the bend; this is in accordance with ‘Chapter 8’, Highways Act 1980 which places a duty on us, as the local authority, to maintain the public highway network in a condition that is safe for users. It’s important to note that this defective roadside gully had been temporarily repaired previously, and to ensure that this does not keep reoccurring, we need to lay 65.5 meters of new pipe. The following statement can be used to communicate with residents:

*We apologise for the disruption caused by the temporary signals in place due to the collapsed gully on Station Road, Betchworth. We are currently coordinating an extensive drainage maintenance and repair scheme to address the underlying issue.*

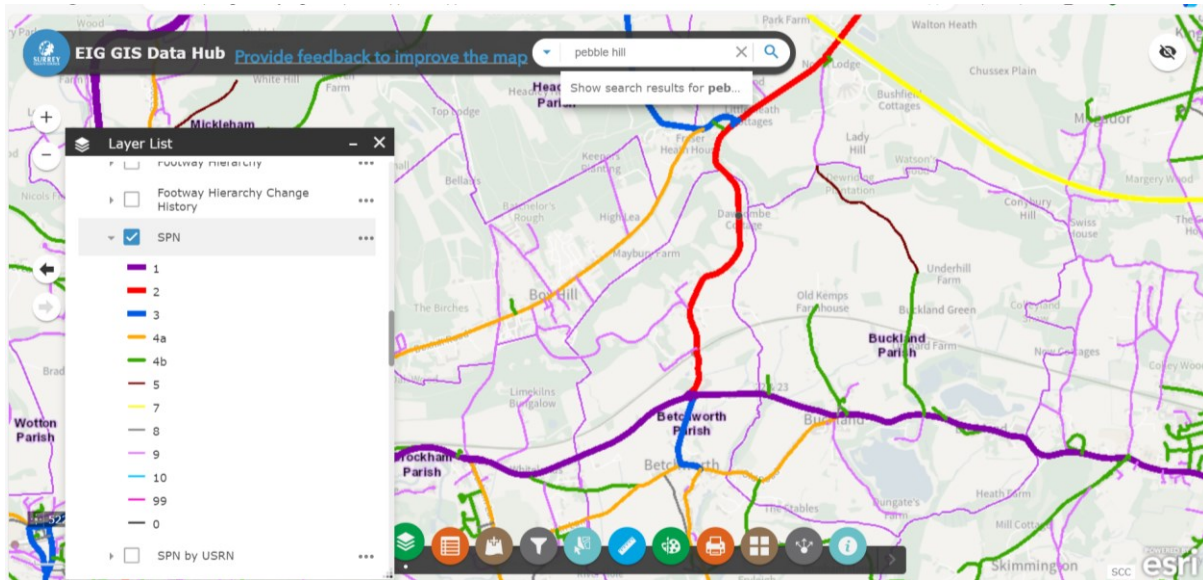
*To ensure the safety of the road network and all road users, temporary traffic lights have been installed at this location and are manually controlled at peak times, while we resource and programme the delivery of this scheme. We understand that the traffic lights may cause some disruption, and we apologise for any inconvenience this may cause.*

*Please be assured we are working to resolve the issue as swiftly as possible and appreciate your patience during this time. Thank you for your understanding and cooperation.*

Pebble Hill is a priority 2 SPN road - Surrey County Council (SCC) Highway Hierarchy is well established; the carriageway definition has been in use since around 1989. The hierarchies are in line with the recommendation for a functional network hierarchy as described in ‘Well-Managed Highway Infrastructure: A Code of Practice’ (October 2016). Surrey County Council Road hierarchy is called the **Surrey Priority Network, or SPN**. The SPN is a risk-based prioritisation of every road that SCC is responsible for. Each hard surfaced road is assigned one of 5 SPN categories as detailed in the image below– SPN 1, 2, 3, 4a or 4b.

**Pebble Hill is classified as a SPN level 2 (highlighted in red on the image below) as it is a main distributor on a major urban network linking A roads with the M25.**

REPORT UPDATE PREPARED BY SCC : Summary of key issues and outcomes for Station Road/Pebble Hill, Betchworth – October 2024



Extent and location of planned drainage scheme on Station Road, Betchworth.

REPORT UPDATE PREPARED BY SCC : Summary of key issues and outcomes for Station Road/Pebble Hill, Betchworth – October 2024

